



The Phoenix Saxton Road, Leeds, LS9 8GJ

£1,025 Per month

Zero Deposit Option Available.

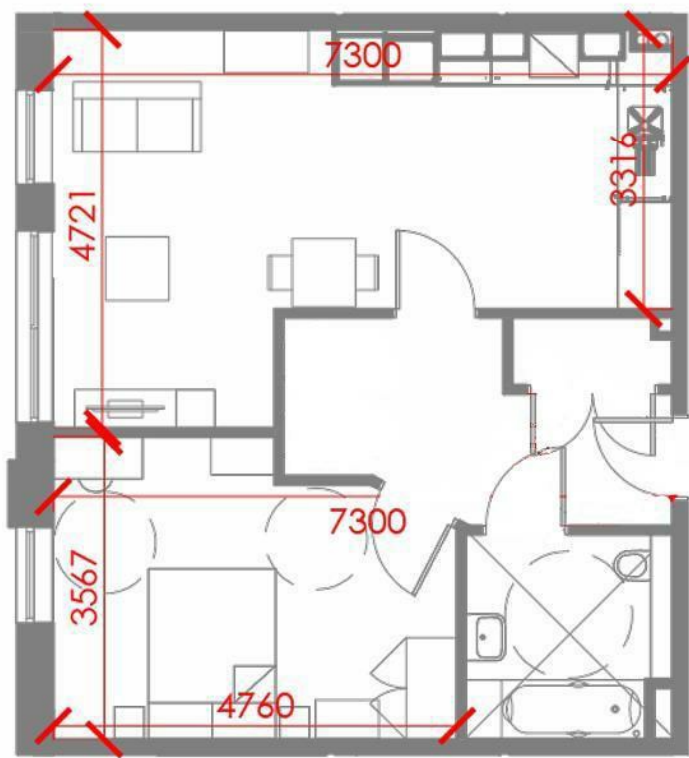
The Phoenix is a new exquisite development located on Saxton Road in the vibrant city centre of Leeds. This modern spacious one-bedroom apartment offers a perfect blend of comfort and convenience, making it an ideal choice for professionals or couples seeking a stylish urban lifestyle.

The apartment is much larger than your average one bedroom apartment and is one of a handful of apartments of its size in the development. The property comprises of a large entrance hall with plenty of storage, a good sized modern bathroom, an L shaped open plan living kitchen with integrated appliances and large windows letting in generous amounts of light and a lovely view over to Leeds Minster. The bedroom is very spacious and offers a super king size bed along with fitted wardrobes.

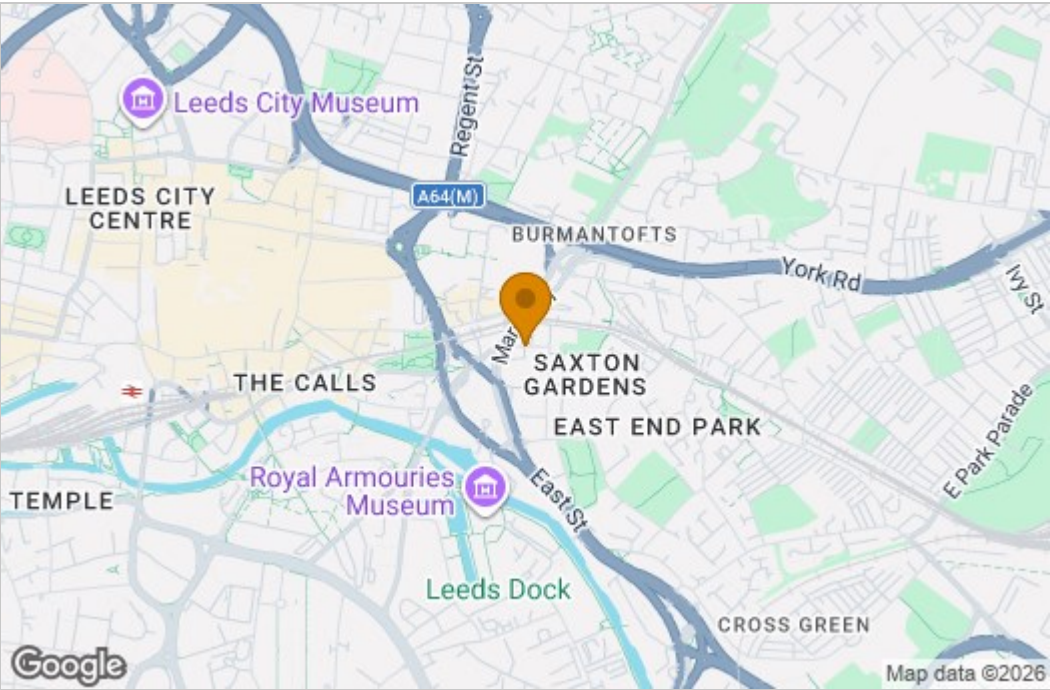
One of the standout features of this property is the 24-hour concierge service, which adds an extra layer of security and convenience to your living experience. Additionally, residents have access to an onsite gym, allowing you to maintain an active lifestyle without having to leave the building.

Living at The Phoenix means you are at the heart of Leeds, with a plethora of shops, restaurants, and cultural attractions right on your doorstep. This apartment not only offers a comfortable living space but also places you in a dynamic community, perfect for enjoying all that city life has to offer.

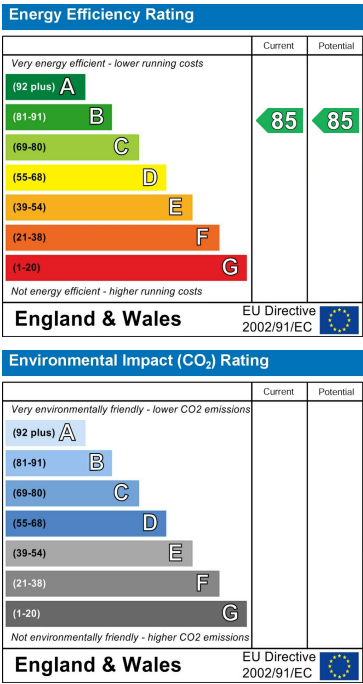
Floor Plan



Area Map



Energy Efficiency Graph



These particulars, whilst believed to be accurate are set out as a general outline only for guidance and do not constitute any part of an offer or contract. Intending purchasers should not rely on them as statements of representation of fact, but must satisfy themselves by inspection or otherwise as to their accuracy. No person in this firms employment has the authority to make or give any representation or warranty in respect of the property.